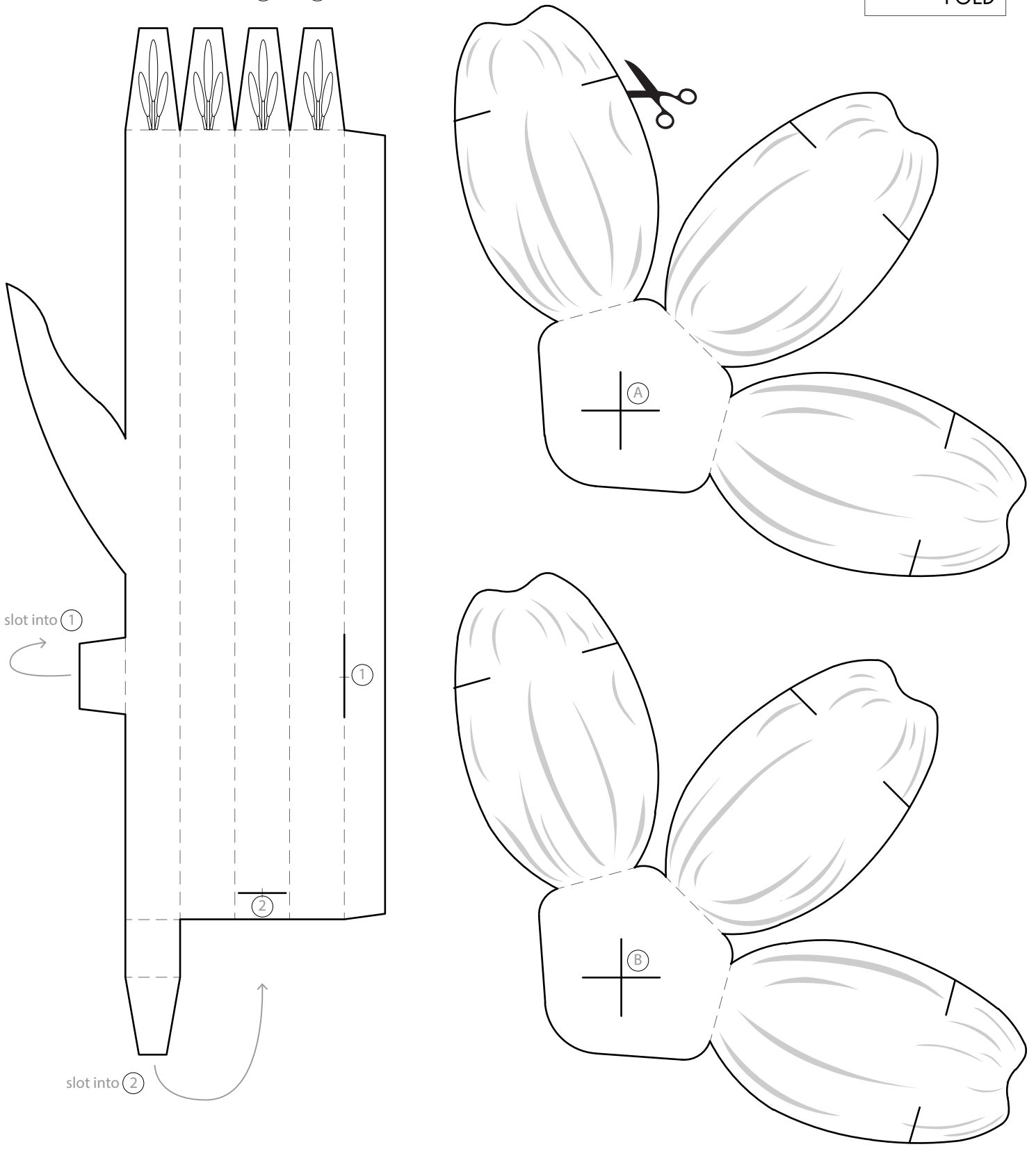


Experience the
Wonders of Nature
with **Gardens by the Bay**



after folding,
insert through (A) and (B)



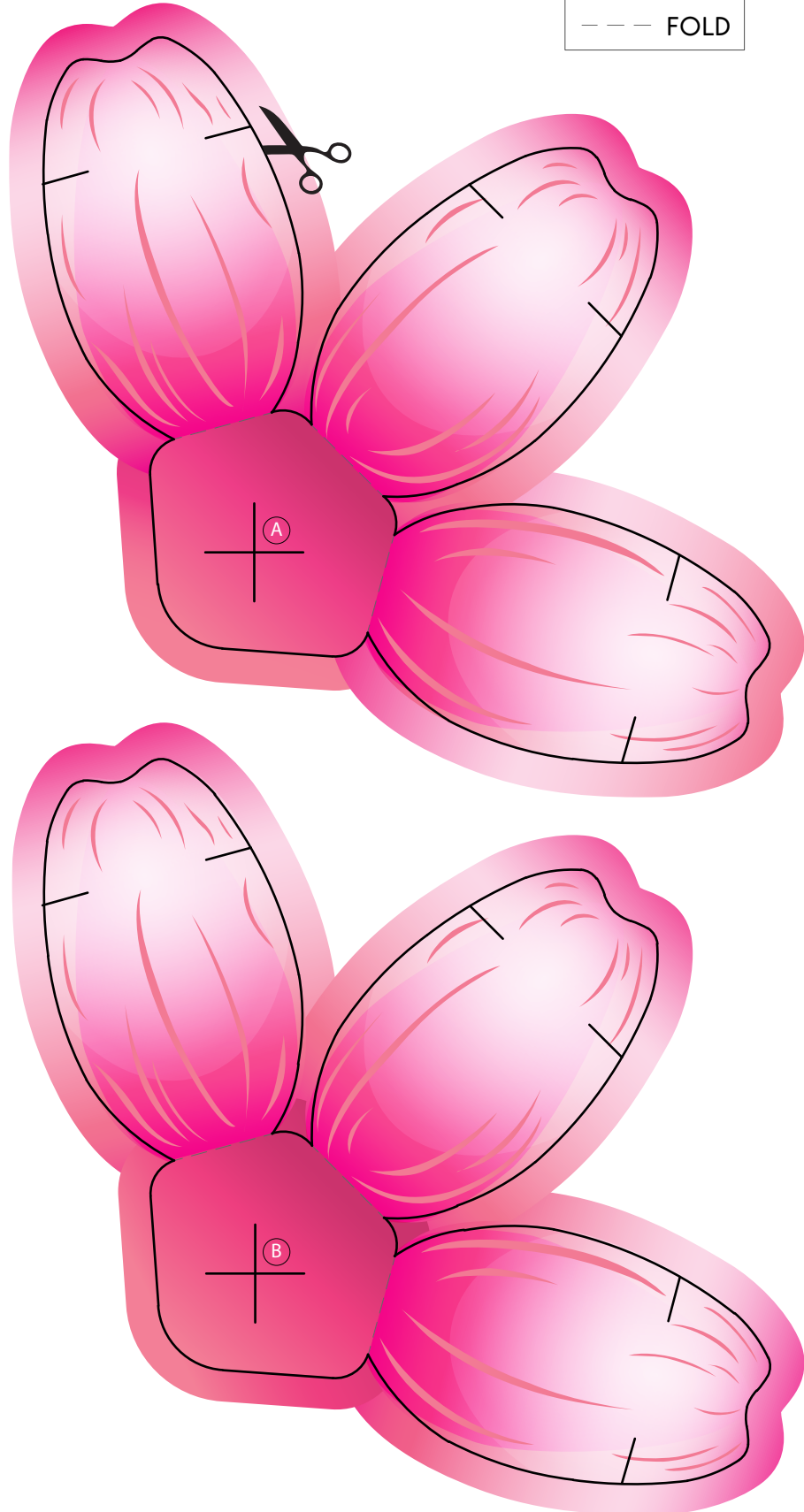
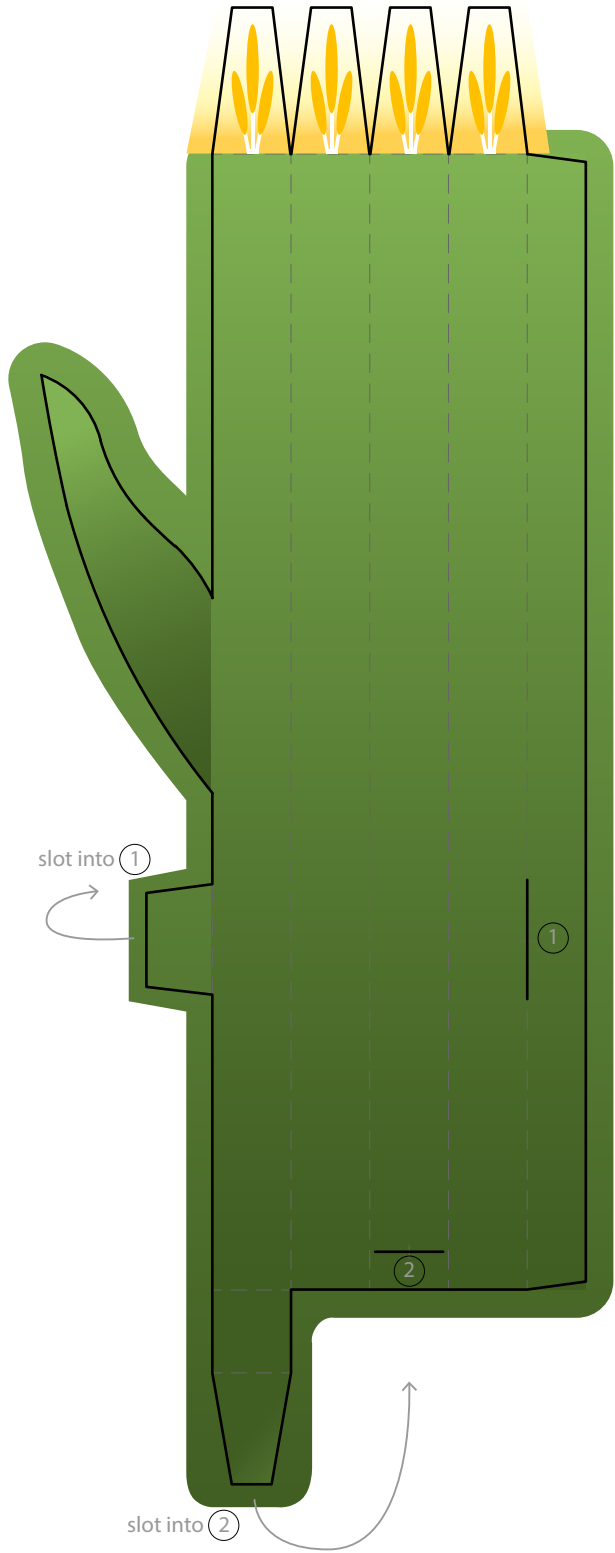
Tip 1: It's easier to colour the activity sheet before cutting out the parts.
Tip 2: For craft tulips to keep their shape better, thicker paper may be used.

Experience the Wonders of Nature

with Gardens by the Bay



after folding,
insert through (A) and (B)



Tip: For craft tulips to keep their shape better, thicker paper may be used.